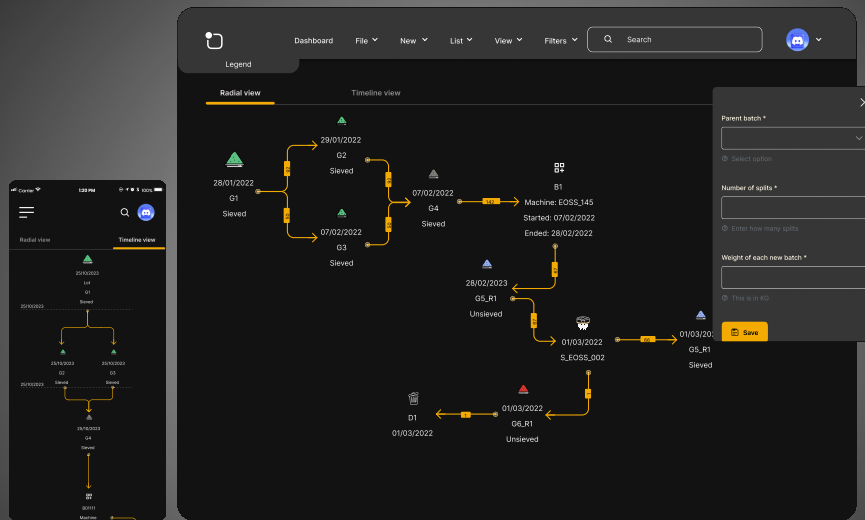




BY DNA AM

- ✓ **Digitise AM Workflows**
- ✓ **Ensure Best Practice**
- ✓ **Secure Your Production**
- ✓ **Trace All Materials**

Crafting Precision, Layer by Layer



Connect

Seamlessly connect to MES or MRP of your choice



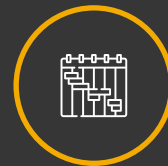
Flexible

Configurable with all AM technologies



Trace

Full end to end materials and batch traceability



Track

Track and control all materials properties



Scan me



+44 (0) 1925598809

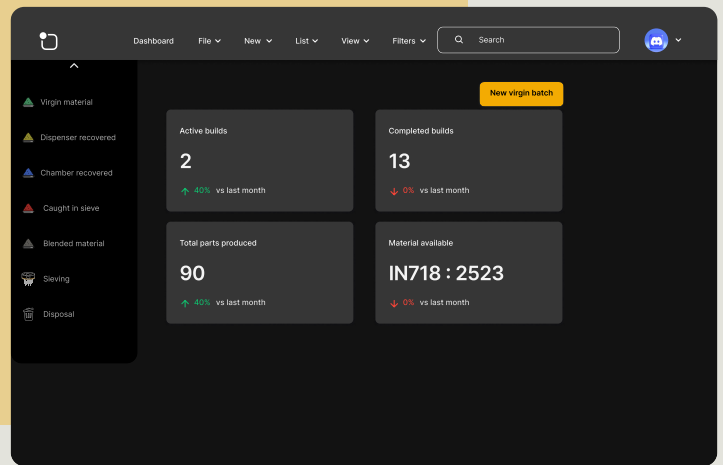


INFO@AMTRACE.COM



WWW.AMTRACE.COM

Key USPs




- ✓ Digitally trace and report all your materials in stock, in builds & beyond.
- ✓ Easily track complex blending and reusing history on one dynamic screen
- ✓ Visualise batch genealogy in both Radial and Timeline modes.
- ✓ Produce digital materials reporting for internal and external uses.
- ✓ Track & control all materials properties from virgin through multiple blends, recoveries, and recycling through to disposal.
- ✓ Specify your stock locations digitally and simply.
- ✓ Available in multi-platform formats.
- ✓ Integrate with your existing MES / MRP for a streamlined shop floor / operator interface.
- ✓ Unique & intuitive screens and easy to navigate UI & UX
- ✓ Utilise Bar Code or QR code scanning for incoming materials data (Jan 2024)
- ✓ Designed for Modern AM and Materials Manufacturing
- ✓ Supports All forms of Additive Manufacturing
- ✓ Supports Unconventional Process Techniques

Beat the queues

Reserve your space now and schedule your meeting with our Senior Management Team!

 +44 (0) 1925598809

 INFO@AMTRACE.COM

 WWW.AMTRACE.COM