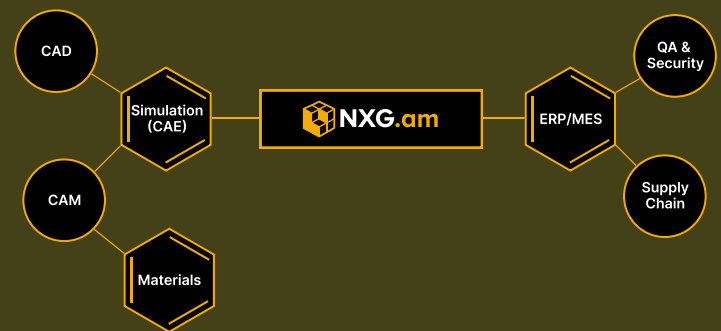




## Digital Solutions to Connect Advanced Manufacturing

### Connecting the additive ecosystem

NXG.am links the AM ecosystem through Materials, CAD, CAM, CAE, ERP, Quality Assurance and supply chain management to provide the end-to-end digital thread to scale additive manufacturing. A configurable MES system, NXG.am powers the next generation of additive manufacturing, allowing you to manage the full range of AM technologies, materials, and sectors within a single system. It manages operations from quotation, sales orders, projects, scheduling, production, post-processing, quality assurance and despatch. Additionally, as a workflow MES system, our integrations with leading file-encryption, build management, and build optimisation platforms bridge the gap between different systems to offer a complete additive manufacturing software solution to help you scale.



### End-to-end traceability

NXG.am provides the highest levels of job, material, and part traceability for any process. It tracks materials through batch splitting and grouping, multiple builds, and recovery. Additionally, with our Shop Floor Data Collection and location tracking, you can monitor who did what, and when, for full traceability.

### Configurable Workflows

Additionally, with varying regulatory standards for different technologies, materials, and sectors, rigid software can become restrictive – preventing you from exploring new opportunities. However, NXG.am allows you to create custom workflows. So, whether you're using EBM, FDM or SLS, you can create the workflows suited to your project, while retaining control required.

#### Traceability

Industry leading trace with version, history and connectivity map, backed by a graph database.

#### Flexibility

Extendible and customisable nodes and edges including customer workflows, part, tools, stock and assembly build processes. Breaks data silos to produce a seamless interaction between several (often separate) verticals in larger organisations.

#### Connectivity

Plugin architecture to connect to multiple desktop or web applications using topology / data level connectivity. Secure API with an ability to build custom connections by NXG/ third party in the future.



Connect your end-to-end AM workflow from DFAM, materials, optimisation, manufacturing execution through to all post-processing & operations



Intuitive new user-friendly interface & user-friendly experience

All new project based manufacturing execution system



*NXG.am will interoperate all stages of advanced manufacturing, including all in-house or external machining, fabrications, assemblies and special processes*



Create, store & clone benchmark projects



Open API architecture - Link your end-to-end AM Eco System together



Complete file & build file management

NXGam world leading digital dynamic visual materials traceability



*Dynamic materials stock & inventory control & management*

*Digital management of blending & splitting materials*



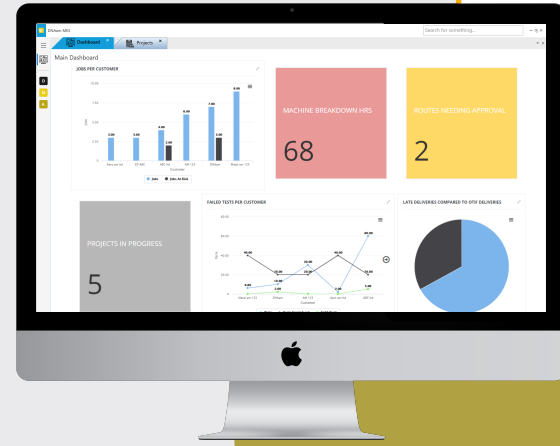
Project scheduling, advanced KPI reporting & analysis



Secure file management built-in



Complete quality management system including sub-con & post processing control built-in



## Project Based Format

NXG.am has a project-based format for carrying out work meaning that multiple jobs can easily be carried out in parallel, this provides a more flexible way of carrying out the manufacturing of parts.

## Stock

Stock has been redesigned to allow the user to handle multiple variants of the same type of stock, whilst also being able to record chemical analysis and characteristics against items of stock.

## Types of AM

The software has been designed to support all 7 types of additive manufacturing and their post-processing requirements. The system is configurable so that only relevant information is shown depending on what AM process is selected.

## Trace

Our trace functionality allows you to see where something originated at the click of a button, this runs throughout the software for parts, tools, users, processes and stock.

*"The NXG.am workflow is a seamless software solution to manage multiple 3D print technologies with full material & part traceability."*

- FDM Digital Solutions



Digital Solutions to Connect  
**Advanced Manufacturing**